

Graphing Trig Functions: All Transformations

Date _____ Period _____

Graph each function using degrees.

1) $y = 2\sin(2\theta - 60) + 2$

2) $y = -2 + 4\sin\left(\frac{\theta}{4} + 315\right)$

3) $y = 3\cos(2\theta - 135) + 1$

4) $y = 4\cos(3\theta + 30) - 2$

$$5) y = 1 + 3 \tan \left(\frac{\theta}{3} - 120 \right)$$

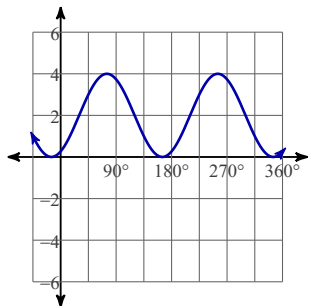
$$6) y = \frac{1}{2} \cdot \tan (2\theta + 240) - 1$$

$$7) y = -2 + 4 \sin (3\theta - 150)$$

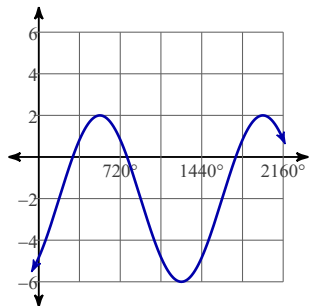
$$8) y = \cos \left(\frac{\theta}{3} - 120 \right) + 1$$

Answers to Graphing Trig Functions: All Transformations

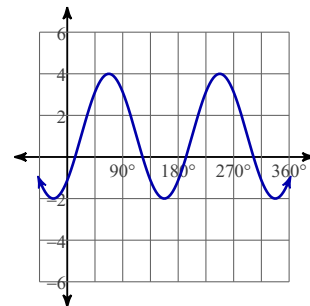
1)



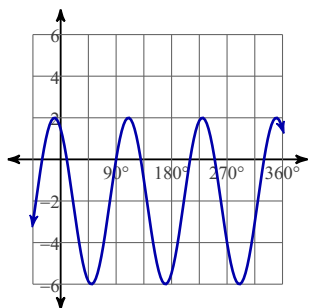
2)



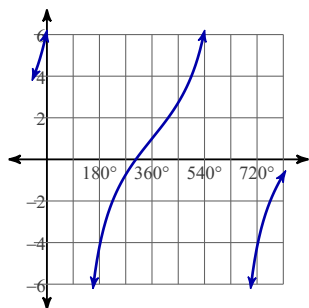
3)



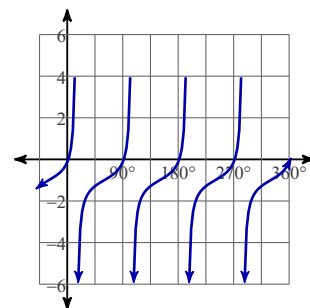
4)



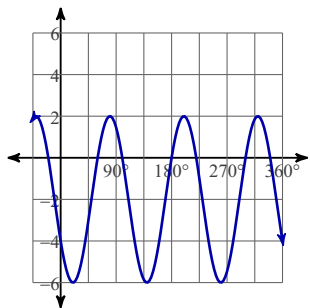
5)



6)



7)



8)

